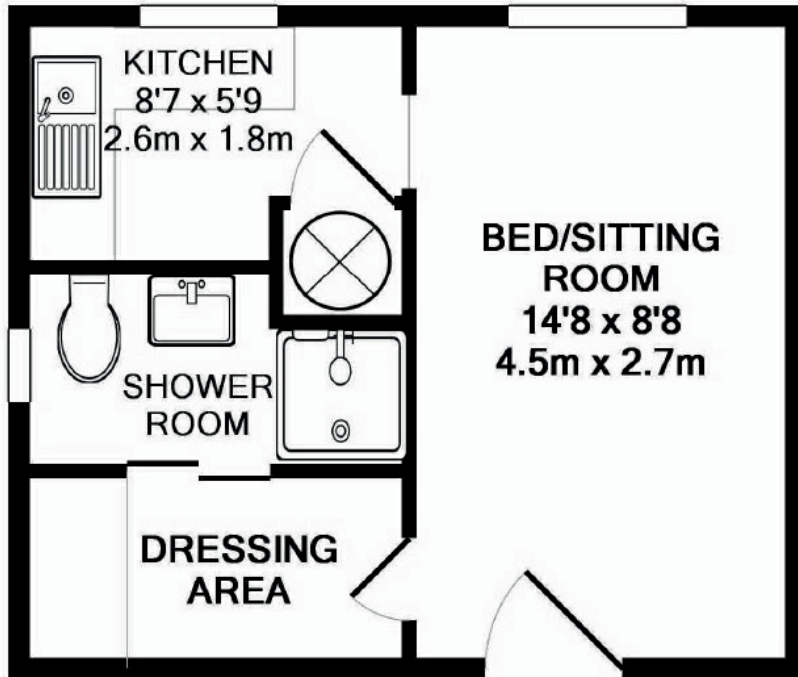


32 Salisbury Close | £115,000

Alton, Hampshire, GU34 2TP

A well presented ground floor studio apartment with a pleasant outlook over communal grounds.





FEATURES

- Double glazed windows
- Shower room
- Living / bedroom
- Kitchen
- Communal garden
- Allocated parking
- Dressing area

LOCATION

The flat is situated in Salisbury Close, a cul-de-sac incorporating a large green and consisting of a variety of detached houses, quadrant homes, bungalows and apartments, which adjoin the open countryside of Windmill Hill. Alton's High Street lies within a 0.6 mile drive and can also be reached by a network of footpaths creating a shortcut not only to the central shops but additional locations in the town. Alton provides multiple shops, including Waitrose, M&S, Sainsbury's, Boots and Iceland, fitness clubs, a library, cultural and educational facilities including Alton College, a station (Waterloo line), weekly and specialist open air market events, a sports centre and 2 golf courses.

DIRECTIONS

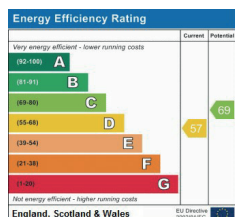
From the Sainsbury's mini-roundabout, proceed to the next roundabout and take the right hand exit into Lower Turk Street and immediately turn right up Turk Street. At the top of the hill, turn right into The Ridgeway, then turn 2nd left into Salisbury Close. At the green, bear left with Salisbury Close where the flat is approached by the first car parking area on the right.

COUNCIL TAX

East Hampshire District Council - Council Tax Band A.

SERVICES

Mains electricity, water & drainage.



78 High Street, Alton, Hampshire, GU34 1EN

t: 01420 87379 e: alton@wprhomes.co.uk

Office Locations: Alton • Farnham • Godalming • Grayshott • Haslemere • London

Property details are a general outline and do not constitute any part of an offer or contract. Services, equipment, fittings or central heating systems have not been tested and no warranty is given or implied that these are in working order. Buyers are advised to obtain verification from their solicitor or surveyor. Fittings and fixtures are not included unless specifically described. Measurements, distances and areas are approximate and for guidance only. This material is protected by laws of copyright.

